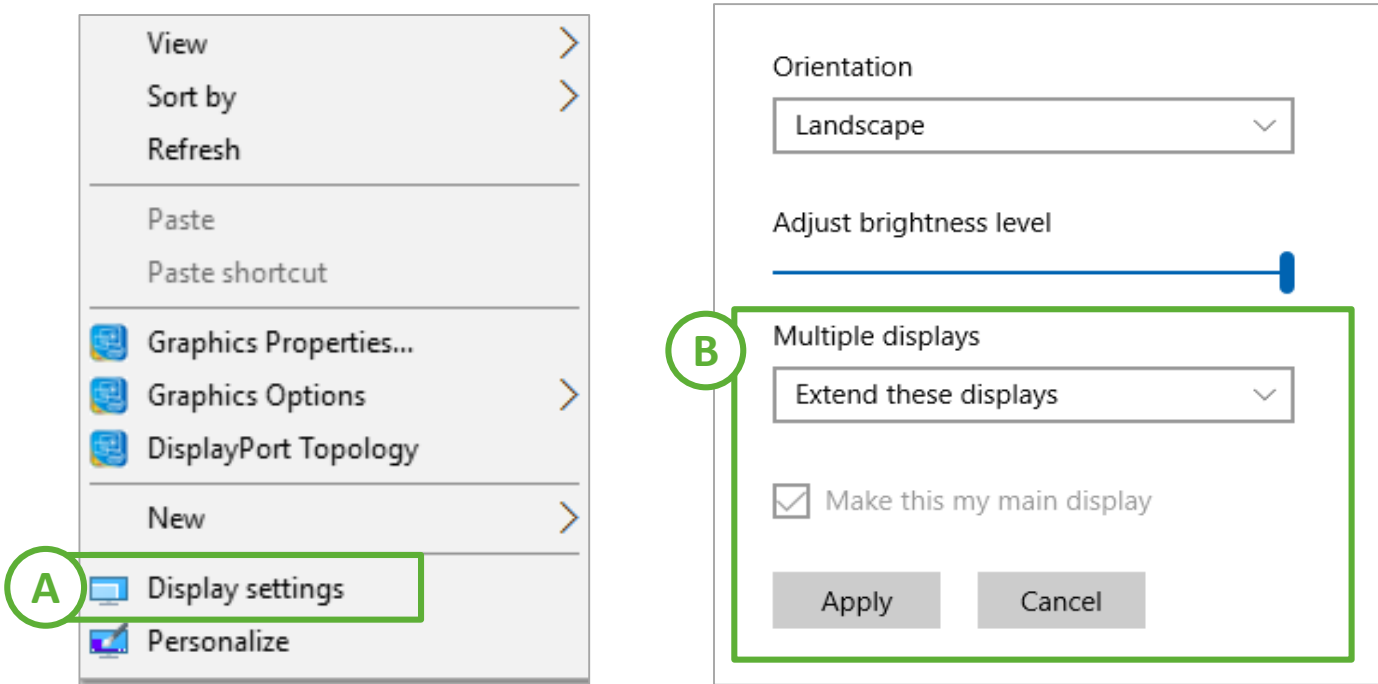


Extended displays allows you to view your desktop on one screen and present your activities on the other display. The below screenshots are from a Windows 10 Desktop.

Using Extended Displays

- A. Right click on your desktop and select Display Settings
- B. Look for the **Multiple displays** drop down menu. Select “Extend these displays”
 - Click on the check box next to “Make this my main display”
 - Click on Apply to put your new settings into effect
- C. If the settings look appropriate, click on “Keep Changes” to accept



Keep these display settings?

Reverting to previous display settings in 5 seconds.

C

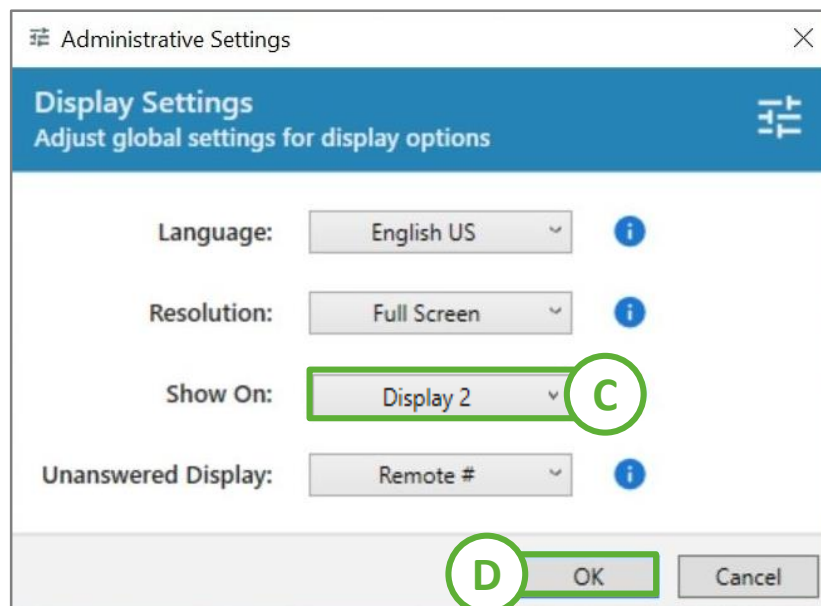
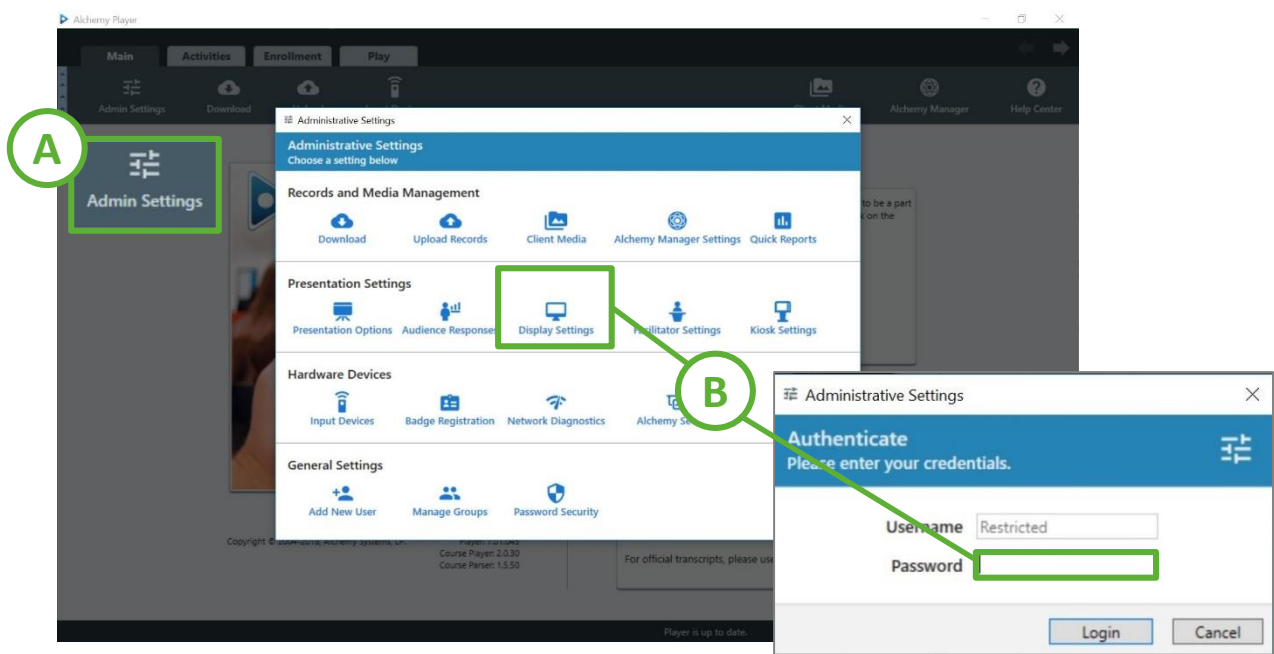
Keep changes

Revert

Facilitator View is a monitoring tool for live feedback on training progress. It is recommended only for rooms with multiple displays (screens).

Player Display Settings

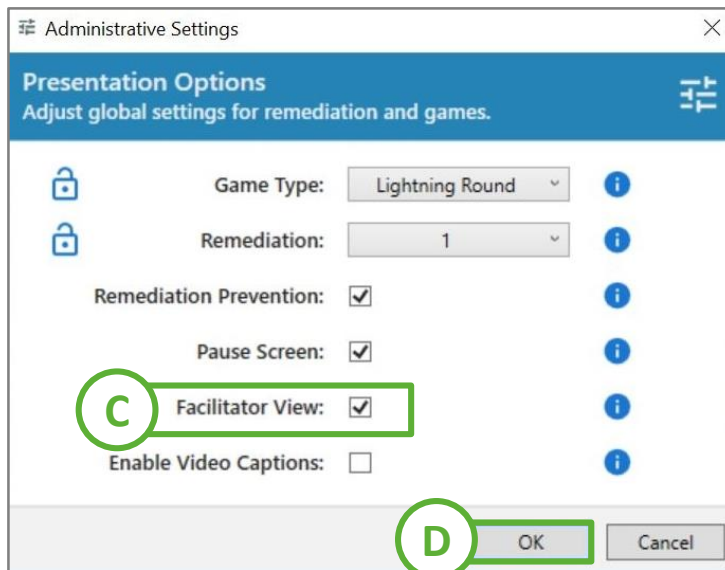
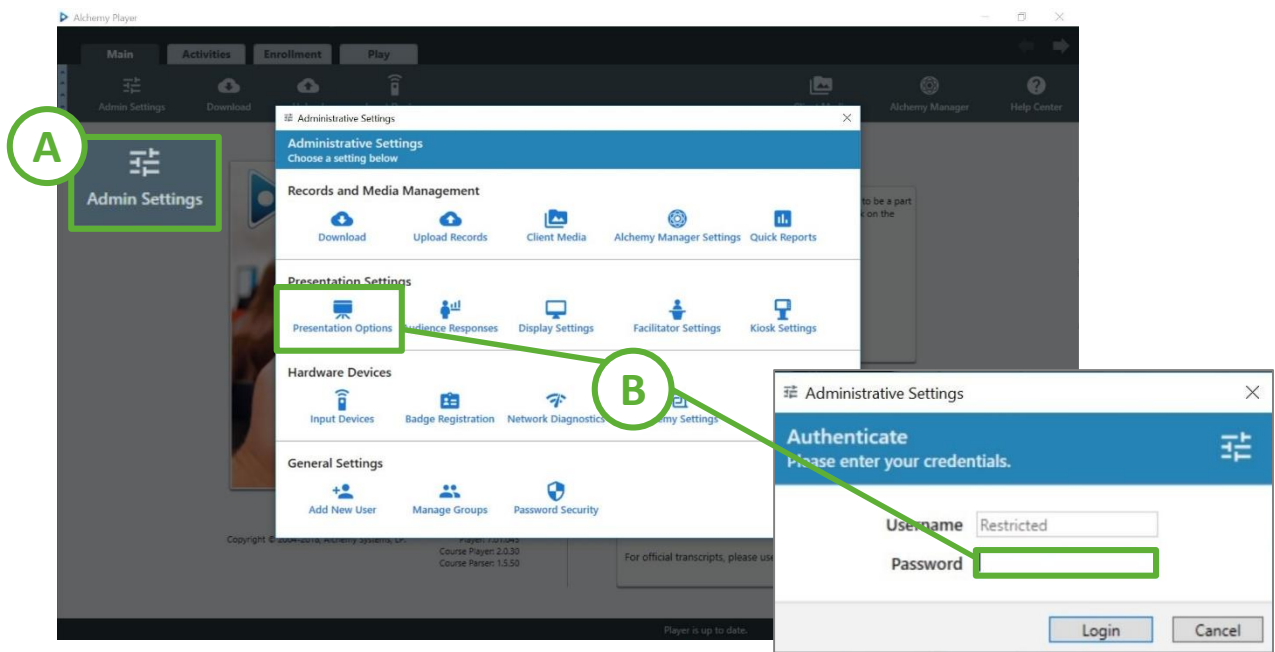
- A. In Player, go to **Admin Settings**
- B. Select **Display Settings**
 - Enter password, alchemy, if prompted
- C. Select **Display 2** from the “Show On” dropdown menu
- D. Select **OK** to save



Facilitator View is a monitoring tool for live feedback on training progress. It is recommended only for rooms with multiple displays (screens).

Activate Facilitator View

- A. In Player, go to **Admin Settings**
- B. Select **Presentation Options**
 - Enter password, alchemy, if prompted
- C. Select **Facilitator View**
- D. Select **OK** to save

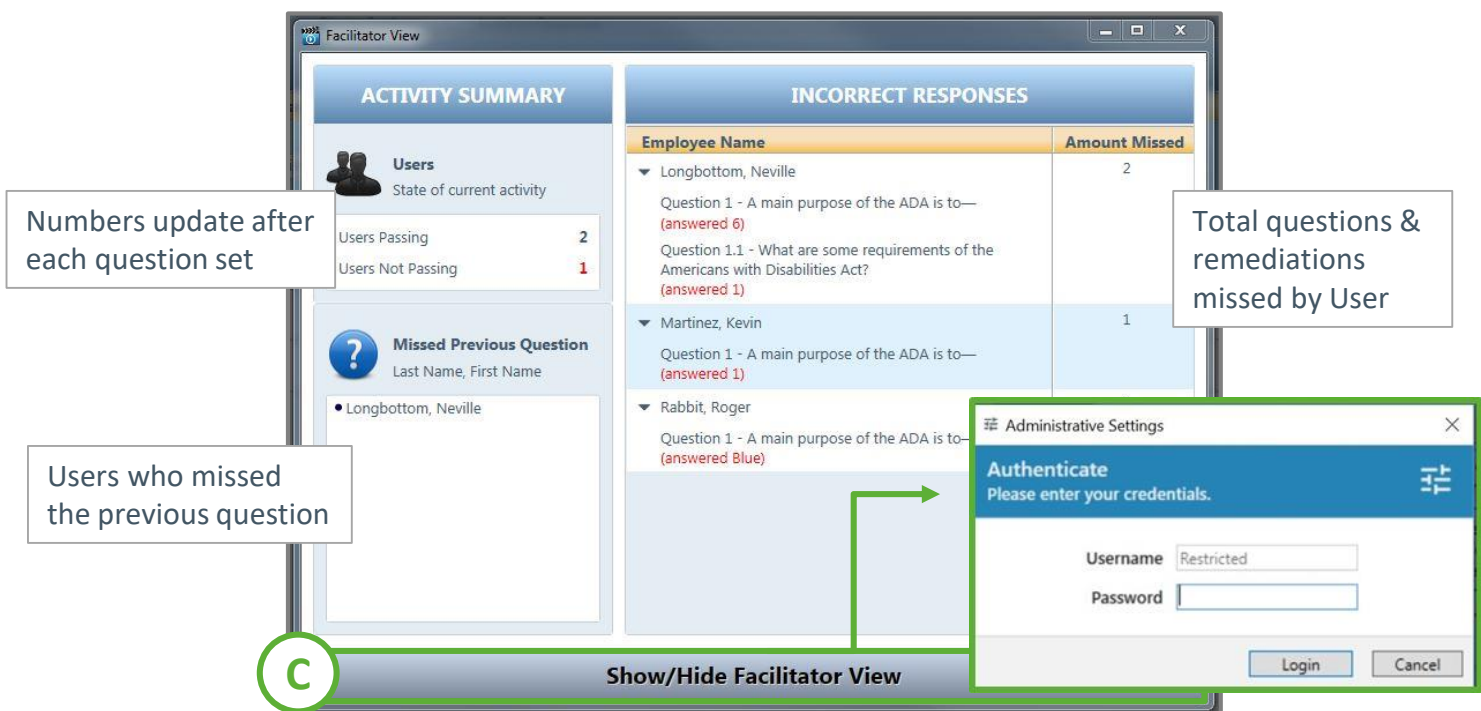


Facilitator View is a monitoring tool for live feedback on training progress. It is recommended only for rooms with multiple displays (screens).

Using Facilitator View

Recommended only for multi-display rooms.

- A. Enroll your class, select your activities, and then play your training in Player
- B. A second window will display on the same screen as your Main Player window
 - If you need to move it, drag it to a private screen
- C. Press "Show/Hide Facilitator View" and enter your password (alchemy)

Numbers update after each question set

Total questions & remediations missed by User

Users who missed the previous question

C

ACTIVITY SUMMARY		INCORRECT RESPONSES									
Users State of current activity Users Passing: 2 Users Not Passing: 1		<table border="1" style="width: 100%; border-collapse: collapse;"> <thead> <tr> <th>Employee Name</th> <th>Amount Missed</th> </tr> </thead> <tbody> <tr> <td> Longbottom, Neville Question 1 - A main purpose of the ADA is to— (answered 6) Question 1.1 - What are some requirements of the Americans with Disabilities Act? (answered 1) </td> <td style="text-align: center;">2</td> </tr> <tr> <td> Martinez, Kevin Question 1 - A main purpose of the ADA is to— (answered 1) </td> <td style="text-align: center;">1</td> </tr> <tr> <td> Rabbit, Roger Question 1 - A main purpose of the ADA is to— (answered Blue) </td> <td></td> </tr> </tbody> </table>		Employee Name	Amount Missed	Longbottom, Neville Question 1 - A main purpose of the ADA is to— (answered 6) Question 1.1 - What are some requirements of the Americans with Disabilities Act? (answered 1)	2	Martinez, Kevin Question 1 - A main purpose of the ADA is to— (answered 1)	1	Rabbit, Roger Question 1 - A main purpose of the ADA is to— (answered Blue)	
Employee Name	Amount Missed										
Longbottom, Neville Question 1 - A main purpose of the ADA is to— (answered 6) Question 1.1 - What are some requirements of the Americans with Disabilities Act? (answered 1)	2										
Martinez, Kevin Question 1 - A main purpose of the ADA is to— (answered 1)	1										
Rabbit, Roger Question 1 - A main purpose of the ADA is to— (answered Blue)											
Missed Previous Question Last Name, First Name • Longbottom, Neville											

Administrative Settings

Authenticate
Please enter your credentials.

Username:

Password:

Login Cancel